



Department of
Medicaid



Resilience through
Integrated Systems and Excellence



Child and Adolescent Behavioral Health
Center of Excellence



Ohio Justice Alliance for Community Corrections 36th Annual Conference

OhioRISE (Resilience through Integrated Systems and Excellence) Overview

10/12/23

Amanda Resler, Executive Director, Choices Coordinated Care Solutions
AResler@ChoicesCCS.org

Kelly Smith, External Affairs Administrator, Ohio Department of Medicaid
Kelly.Smith@Medicaid.ohio.gov

Meeting Agenda

- 1** | OhioRISE Program Basics
- 2** | Volunteer Activity
- 3** | Care Management Entities and Care Coordination
- 4** | Implementing OhioRISE

Summary of OhioRISE Objectives

Improve design, delivery, and timeliness of care coordination and supports kids need to thrive



OhioRISE New & Improved Services

Limited, Moderate and Intensive Care Coordination

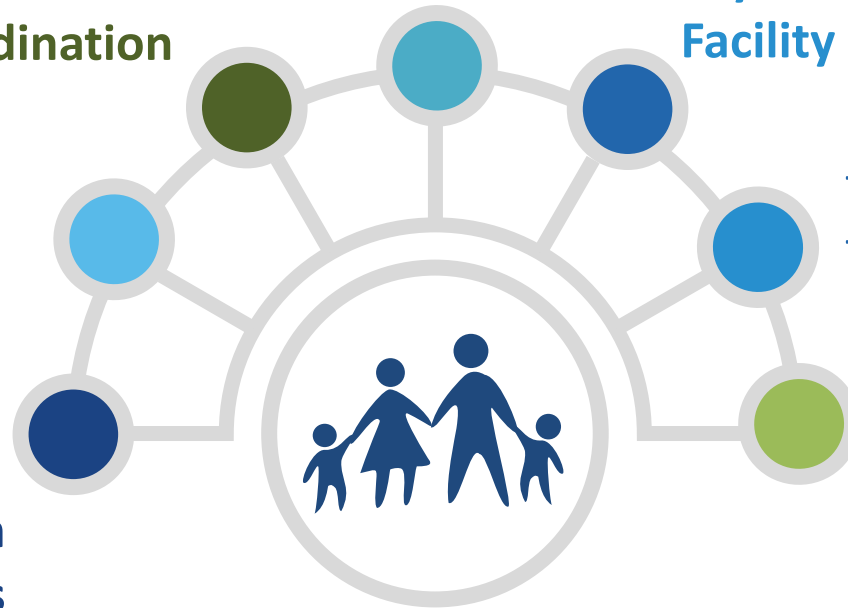
Mobile Response Stabilization Service (MRSS)

If you or someone close to you is experiencing a mental health or behavioral health crisis, call 1-888-418-MRSS (6777).

Existing Behavioral Health Services

Intensive Home-Based Treatment (IHBT)

Psychiatric Residential Treatment Facility (PRTF)



- Behavioral Health Respite
- Primary Flex Funds

New OhioRISE Waiver

- Unique waiver services & eligibility
- Out-of-Home Respite
 - Transitional Services and Supports
 - Secondary Flex Funds

*Youth in OhioRISE will have their behavioral health benefits covered by Aetna Better Health of Ohio, the OhioRISE specialized managed care program and their physical health benefits covered by their current managed care program or fee-for-service Medicaid.

OhioRISE Eligibility

Children must meet all of the criteria below

Medicaid Eligible

- Fee for service or managed care
- May also have an existing 1915(c) waiver – Intellectual/Developmental Disability, Ohio Home Care, etc.

Age 0-20 at time of enrollment

Require Significant and Intensive Behavioral Health Treatment

- Meet Functional Needs Criteria as assessed by the Child and Adolescent Needs and Strengths (CANS); or
- An inpatient stay in a hospital for mental illness or Substance Use Disorder (SUD);

What is a CANS Assessment?

The **Child and Adolescent Needs and Strengths (CANS)** is a functional assessment tool that:

- Assesses both child and family **needs and strengths**
- Provides **decision support** to identify appropriate approaches of care coordination
- Used to make OhioRISE **program eligibility determinations**
- Used to support OhioRISE **care planning**



CANS for OhioRISE purposes

OhioRISE uses the CANS to:

1. **Determine program eligibility**
2. **Assist with determining OhioRISE 1915(c) waiver Inpatient Psychiatric Level of Care eligibility**
3. **Recommend a tier of care coordination:**
 - Tier 1: Limited Care Coordination
 - Tier 2: Moderate Care Coordination
 - Tier 3: Intensive Care Coordination
4. **Support decision making for out of home treatment settings:**
 - Mental Health Residential Treatment
 - Recommends ASAM assessment when applicable
 - Intensive Care Facility with Intensive Behavioral Support (IBS) Rate Add-On
 - Psychiatric Residential Treatment Facility (PRTF)

A group of people, mostly women, are shown from the chest up, with their hands raised in a gesture of participation or agreement. They are in a dimly lit room, possibly a meeting or workshop. The background is blurred, focusing attention on the hands and the text overlay.

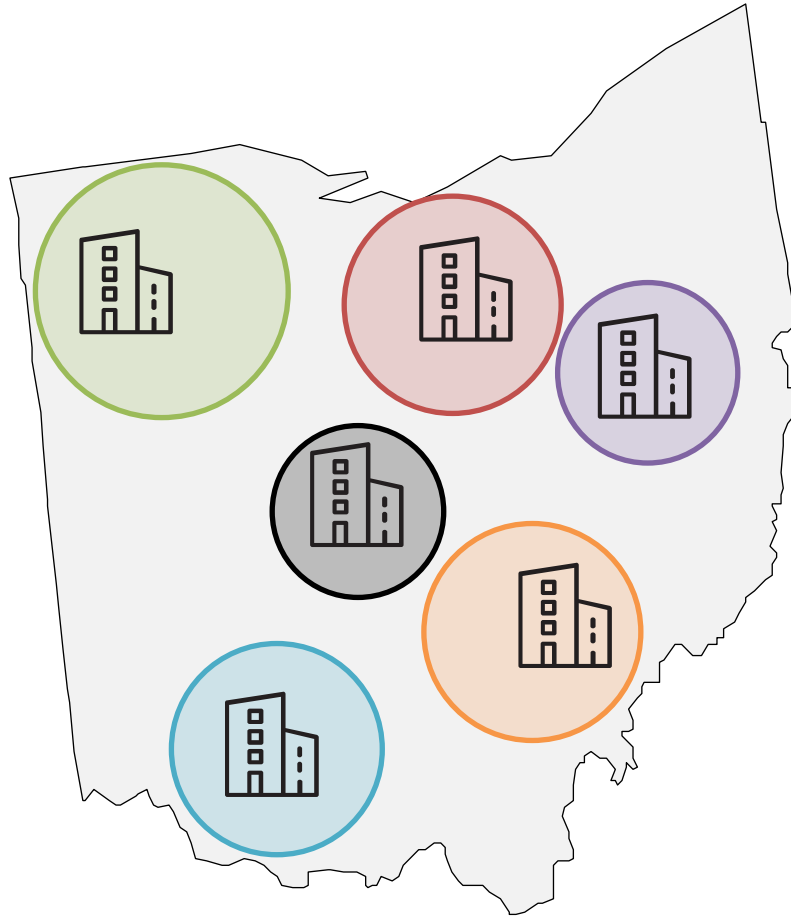
VOLUNTEERS NEEDED:

Group Activity

‘What it’s Like to Experience
Multiple Systems’

Care Management Entities and Care Coordination

What is a Care Management Entity (CME)?



A **Care Management Entity (CME)** is a community-based organization that serves as the “**locus of accountability**” for delivering the Wraparound Model for a catchment (geographic) area of Ohio to serve children and youth enrolled in OhioRISE. They are a “go-to” place to help families, providers, and other community partners to navigate the multisystem environment.

CMEs’ Primary Responsibilities:

- **Care Coordination:** provide wraparound-driven care coordination services to OhioRISE enrollees living in the catchment area
- **Community Resource Development:** ground and grow the System of Care within the CME’s catchment area



Care Management Entity (CME)



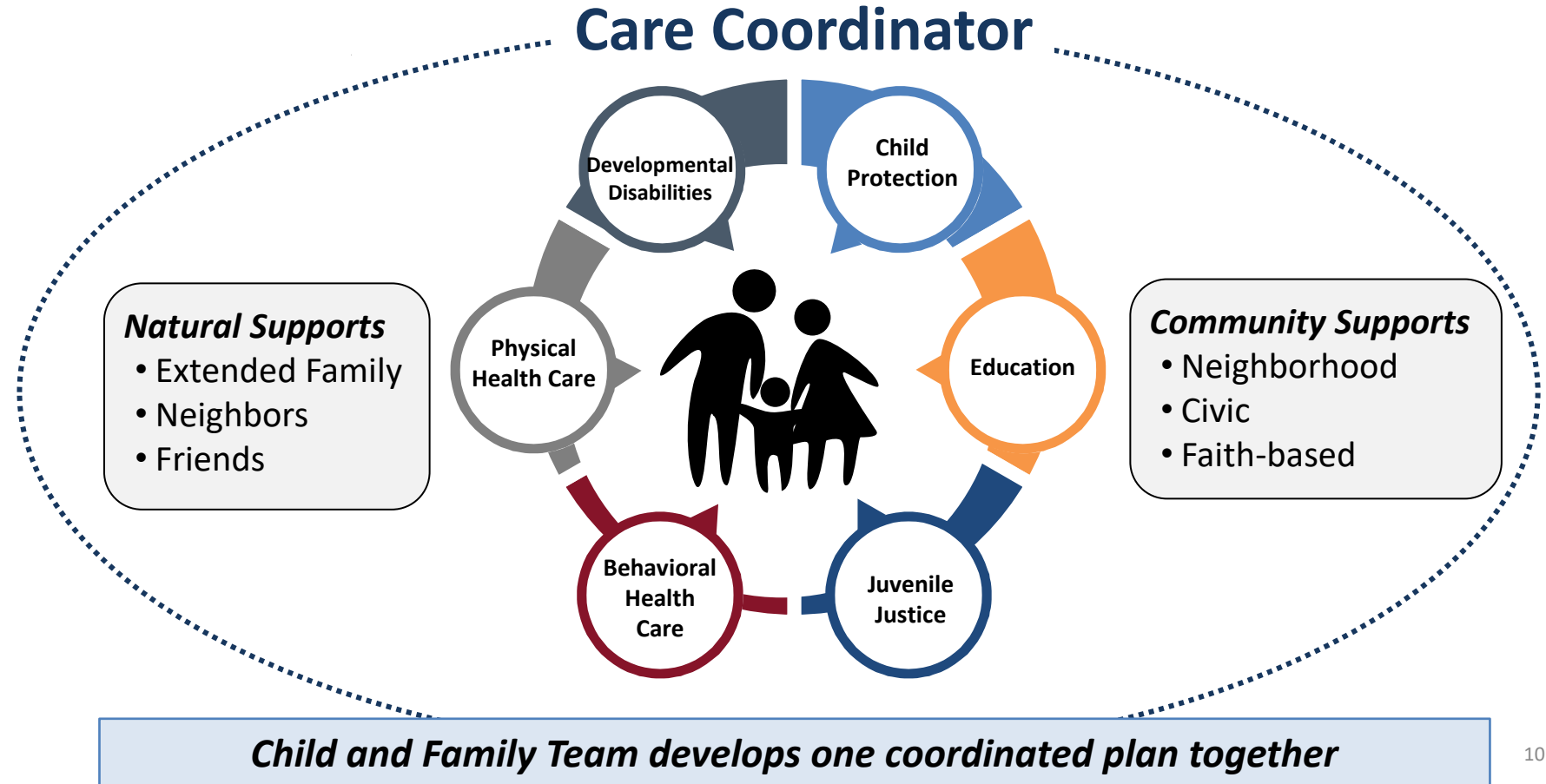
CME’s Catchment Area

OhioRISE Offers Systems More Resources

High Fidelity Wraparound Model

In Wraparound, a dedicated Care Coordinator coordinates the work of system partners and other natural helpers so there is one coordinated plan.

- Immediate access to care coordination to assist with accessing services and supports
- Deep dive into what kids and families need, based on each child/youth's CANS and use of the wraparound process
- A team. Probation officers, case workers, GALs, defense attorneys, other community partners aren't alone, and they have resources to help.



OhioRISE in Montgomery and Preble Counties

Care Coordination Services

A landscape photograph of a rural area. In the foreground, there is a green field. In the middle ground, there is a brown field. In the background, there are several farm buildings, including a large barn and a smaller structure, under a clear, light blue sky.

Choices Coordinated Care solutions

- Location: 77 E Woodbury Dr Dayton, OH 45415
- Contact: <https://choicessccs.org/>
- Phone: (937)373-7848
- Our crisis line for Ohio families served by Choices is (937)739-8940
- Services: Care Coordination
- Youth and Families
- Members ages 0-21
- 23 Care Coordinators
- 6 supervisors, Clinical Director, Operations Director
- Executive Director

OhioRISE Breakdown

OhioRISE is currently serving 418 members.

30 are residents of Preble Co and 388 are Montgomery Co.

The majority of these youth are involved with either Child Services and/or Juvenile Probation.

Who is involved with Care Coordination

Youth/ family

Informal supports- extended family or friends

Behavioral health providers- counseling, medication management

Placement providers- case managers, therapists and foster parents

Schools- public, community and alternative schools

Probation/ Court

Children Services

CASA/ GAL

Board of Developmental Disabilities

Family and Children First

How can I get involved with OhioRISE

Complete a CME referral to Choices at <https://form.jotform.com/22503651849054>

The referral will be reviewed, and the referred will be contacted to obtain information and to then be assigned a care coordinator/CANS assessor.

The Care Coordinator will meet with the family and youth to complete a Child and Adolescent Needs and Strengths Assessment (CANS)

After the CANS determines if the youth is eligible for the program, the youth is assigned to a level of care coordination. Next, the Care Coordinator will pull together a team of providers for the youth to begin the process of identifying goals and objectives for a Care Plan

Benefits and Opportunities



Benefits of kids being in OhioRISE— particularly for court or child welfare involved

- “Clinical” reasons OhioRISE and care coordination can help - Choices
- Specific case examples



Opportunities to start building relationships between CMEs and courts

- How did this happen in Montgomery Co?
- What did it take to embed OhioRISE into the juvenile justice system?



Ways to support the relationship

- MOUs with which community partners?
- New opportunities, developing relationships with other community partners.
- Training
- Leadership buy-in, putting in some time and effort to change your operations and mentality
- Court helping to press the community on importance of OhioRISE, making connections and being a convener. We need to entrench OhioRISE in your community – court can help make this happen. Juvenile courts are uniquely situated to create connections.

Operationalizing OhioRISE

 **What you have to do within your own organization and work on operationally to make this work**

- Processes that need to be updated
- Forms that need to be updated
- Checks in place – what do you do when you see a kid isn't enrolled

 **What role does flexibility play?**

OhioRISE Success

- Choices has been working with a young man who had been described as very combative and constantly getting kicked out of school. Most recently he ran in and out of traffic and got into someone else's car who he did not know. His grandmother had to block traffic with her car in which he continued to head towards traffic. His grandmother had reached a point where she was unsure how to help her grandson. Through OhioRISE he was connected with, I Am Boundless, where they identified the timing of his medication needing to be adjusted, and his behavior started to change drastically. He was able to go on a trip to Disney with no problematic behaviors reported. He has also been connected with 2 mentors who have provided positive interactions and connections. He is on a basketball team and a drumming team. He also does community service each week, all of which have been very successful with no concerns. Grandmother can now take him to the grocery store without worry. Grandmother states she hopes he continues down this positive path.
- Currently he is successfully attending his regular school this year. He continues to work with his care coordinator through OhioRISE.

How to Refer Youth to OhioRISE Reference Slides

Which CMEs will serve Ohio's CME catchment areas?



CME Provider	Counties	Area
Unison Health	Defiance, Fulton, Henry, Lucas, Mercer, Paulding, Putnam, Van Wert, Williams	A
Harbor	Crawford, Erie, Hancock, Huron, Marion, Ottawa, Sandusky, Seneca, Union, Wood, Wyandot	B
National Youth Advocate Program*	Allen, Auglaize, Champaign, Clark, Darke, Hardin, Green, Logan, Madison, Miami, Shelby	C
Choices Coordinated Care Solutions	Montgomery, Preble	D
CareStar	Butler, Clinton, Warren	E
Lighthouse Youth and Family Services*	Hamilton (West)	F
Cincinnati Children's Healthvine	Adams, Brown, Clermont, Hamilton (East), Lawrence, Scioto	G
Integrated Services for Behavioral Health	Athens, Fayette, Gallia, Jackson, Highland, Hocking, Meigs, Pickaway, Pike, Ross, Vinton	H
Integrated Services for Behavioral Health	Coshocton, Fairfield, Guernsey, Morgan, Muskingum, Noble, Perry, Washington	I
Jefferson Co. Educational Service Center	Belmont, Carroll, Columbiana, Harrison, Jefferson, Monroe, Stark, Tuscarawas,	J
The Village Network*	Franklin (West)	K
The Buckeye Ranch	Franklin (East)	L
I Am Boundless, Inc.	Delaware, Knox, Licking, Morrow	M
Wingspan Care Group	Lorain, Medina	N
Coleman Health Services	Ashland, Holmes, Richland, Wayne	O
OhioGuidestone	Cuyahoga (West)	P
Positive Education Program	Cuyahoga (Central)	Q
Ravenwood Health	Ashtabula, Cuyahoga (East), Geauga, Lake	R
Coleman Health Services	Portage, Summit	S
Cadence Care Network*	Mahoning, Trumbull	T

* In Partnership with the Child and Family Health Collaborative

CME Contact Information

CME Provider	Area	Color	Online Referral Portal Link	Direct Email	Direct Phone Number	Phone Number for Issues or Concerns
Unison Health	A		https://www.unisonhealth.org/forms/ohiorise-referrals/	ejay@unisonhealth.org	419-214-4673	419-214-4673
Harbor	B		https://harborhelps.wufoo.com/forms/w1v0ftfg1hwh028/	kmollenkopf@harbor.org	800-475-4449	800-475-4449
National Youth Advocate Program*	C		https://form.jotform.com/221865738579171	OHRiseCANS@nyap.org	419-221-2821	419-810-6240
Choices Coordinated Care Solutions	D		https://form.jotform.com/222503651849054	OhioRISE@ChoicesCCS.org	937-373-7848	937-271-9714 or 937-739-8940
CareStar	E		N/A	CANS@carestar.com	614-729-6323	614-729-6323 or 614-384-8110
Lighthouse Youth and Family Services*	F		N/A	ohiorise@lys.org	513-475-7122	513-475-7122 or 513-213-0396
Cincinnati Children's Healthvine	G		N/A	OhioRISE@cchmc.org	513-636-5007	513-803-6292
Integrated Services for Behavioral Health	H		N/A	Ohiorise-h@isbh.org	740-300-0339	740-300-0339
Integrated Services for Behavioral Health	I		N/A	Ohiorise-i@isbh.org	740-300-0338	740-300-0338
Jefferson Co. Educational Service Center	J		https://icesc.jotform.com/222078114063043	ltrushel@icesc.org	740-406-0440 or 740-792-4011	740-406-0440 or 740-792-4011
The Village Network*	K		https://intakeq.com/new/Yr9sj	TVNOhioRISEcme@thevillagenetwork.com	614-253-8416 ext. 8416	330-201-2300
The Buckeye Ranch	L		https://intakeq.com/new/Yr9sj	Family_Resources_Questions@buckeyeranch.org	614-384-7798	614-384-7798
I Am Boundless, Inc.	M		https://iamboundless.org/ohiorise-referral	acarriker@iamboundless.org kszabo@iamboundless.org	740-276-5500	740-276-5500 ext. 2497 or ext. 2258
Wingspan Care Group	N		N/A	CMEIntake@wingspancg.org	440-723-5504	440-723-5504
Coleman Health Services	O		https://www.colemanservices.org/services/ohiorise/	ohiorise@colemanservices.org	888-475-RISE	234-703-9934
Ohio Guidestone	P		N/A	carecoordinationreferral@ohioguidestone.org	1-866-502-RISE (Option #3)	440-666-4301
Positive Education Program	Q		N/A	pepohiorise@pepcleve.org	216-361-2441	216-361-9100
Ravenwood Health	R		N/A	cookd@ravenwoodcme.org	833-382-1576	440-477-5309
Coleman Health Services	S		https://www.colemanservices.org/services/ohiorise/	ohiorise@colemanservices.org	888-475-RISE	330-676-6906
Cadence Care Network*	T		N/A	Lori.shelby@cadencecare.org	888-245-3340 or 330-544-8005	330-544-8005

CANS Referral for Counties with 2+ CMEs

Cuyahoga County

East

44022, 44040, 44090, 44117, 44119, 44123, 44124, 44132, 44139, 44143, 44146

Central

44101, 44102, 44103, 44014, 44106, 44108, 44110, 44112, 44114, 44118, 44120, 44121, 44122, 44127, 44128, 44137, 44144, 44199, 44191, 44192, 44195

West

44017, 44070, 44105, 44107, 44109, 44111, 44113, 44115, 44116, 44125, 44126, 44129, 44130, 44131, 44133, 44134, 44135, 44136, 44138, 44140, 44141, 44142, 44145, 44147, 44149, 44181, 44188, 44190, 44193, 44194, 44197, 44198

Hamilton County

East

45014, 45069, 45111, 45140, 45174, 45201, 45202, 45203, 45204, 45205, 45206, 45207, 45208, 45209, 45212, 45213, 45226, 44227, 45230, 45236, 45241, 45242, 45243, 45244, 45249, 45250, 45255, 45254, 45262, 45263, 45264, 45269, 45270, 45271, 45273, 45280, 45298, 45299

West

45001, 45002, 45030, 45033, 45039, 45041, 45051, 45052, 45211, 45214, 45215, 45216, 45217, 45218, 45219, 45220, 45221, 45222, 45223, 45224, 45225, 45229, 45231, 45232, 45233, 45234, 45235, 45237, 45238, 45239, 45240, 45246, 45247, 45248, 45251, 45252, 45253, 45258, 45267, 45268, 45274, 45296

* Franklin County CANS referrals direct to The Buckeye Ranch.

Options for Initiating a Referral to OhioRISE/CANS Assessment

- ❖ Contact the youth’s MCO directly.
 - MCO must ensure an initial CANS assessment appointment for the purpose of determining OhioRISE eligibility is scheduled within 72 hours of referral to the MCO.
 - The MCO must have a process in place to ensure the initial CANS assessment is completed within 10 business days after scheduling.

MCO	Contact Information for Providers		Contact Information for Youth and Families
	Phone Number	Email	Phone Number
AmeriHealth Caritas	1-833-464-7768	DL-ACOH_CareCoordination@amerihealthcaritasoh.com	1-833-764-7700
Anthem Blue Cross and Blue Shield	1-844-912-0938	ohbhcasemanagement@anthem.com	1-844-912-0938
Buckeye Community Health Plan	1-419-304-4300	Brandi.M.Hahn@CENTENE.COM	1-866-246-4358
CareSource Ohio, Inc.	1-800-488-0134	care4uspecialpopulations@caresource.com	1-800-488-0134
Humana Healthy Horizons in Ohio	1-877-856-5707	OHMCDOhioRISE@humana.com	1-877-856-5702
Molina Healthcare of Ohio, Inc.	1-800-642-4168	population_health@MolinaHealthcare.com	1-800-642-4168
UnitedHealthcare Community Plan of Ohio, Inc.	1-800-600-9007	ODMEDI_HELPDESK@uhc.com	1-800-895-2017

- ❖ If the child or youth is in fee-for-service Medicaid, contact the Medicaid Consumer hotline at **800-324-8680 (TTY: 711)** to identify nearby CANS assessors that can be contacted to schedule a CANS assessment.
- ❖ Contact OhioRISE Member Services at **833-711-0773 (TTY: 711)** from 7 a.m. to 8 p.m. Monday through Friday.
 - Aetna Better Health of Ohio will work with the youth and if applicable, their MCO, to coordinate a referral for a CANS Assessment to determine eligibility for the OhioRISE program.

Implementing OhioRISE

OhioRISE Metrics

Ohio CANS Assessors Registered in the CANS IT System*

3,132



Children and Youth Enrolled in OhioRISE*

25,380



Youth in Custody enrolled in OhioRISE*

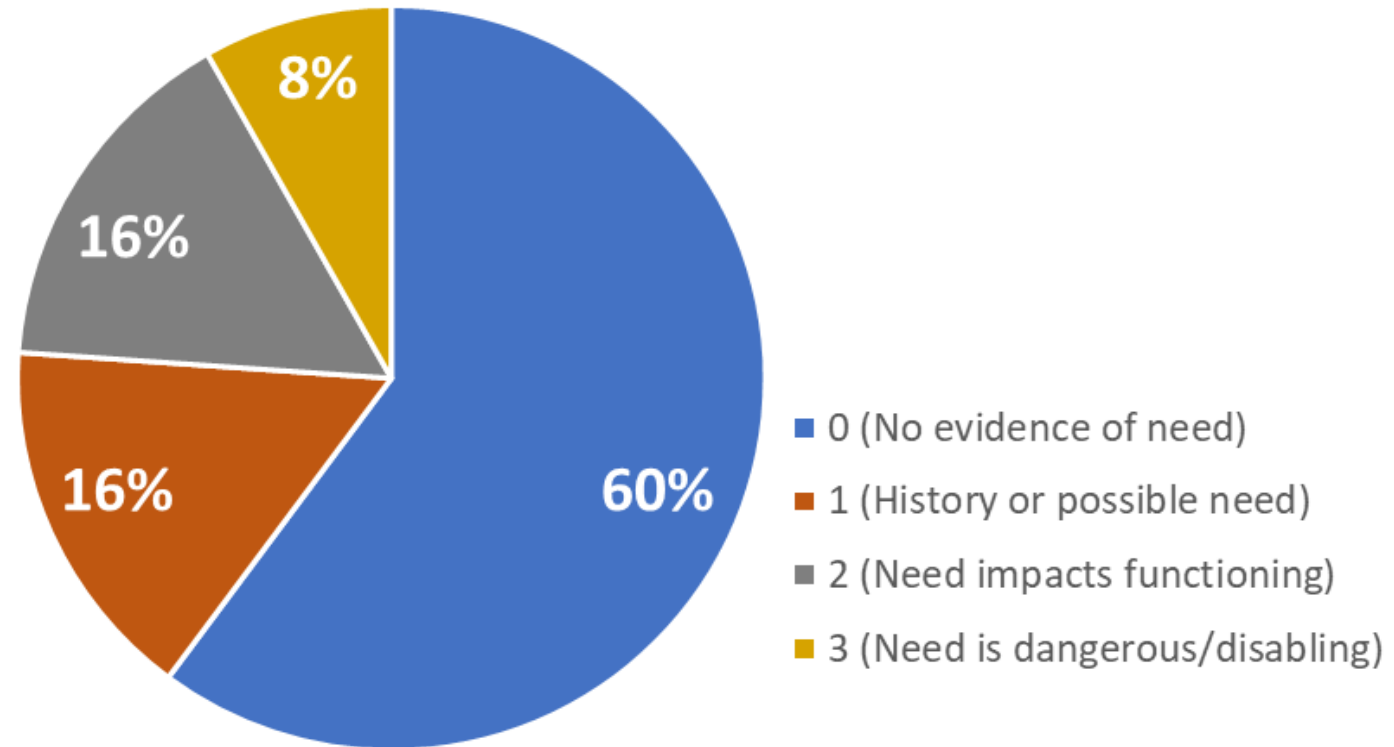
3,016



**Data collected as of Sept. 23, 2023*

OhioRISE Metrics

Legal Needs (Age 6+)



Questions and Answers

